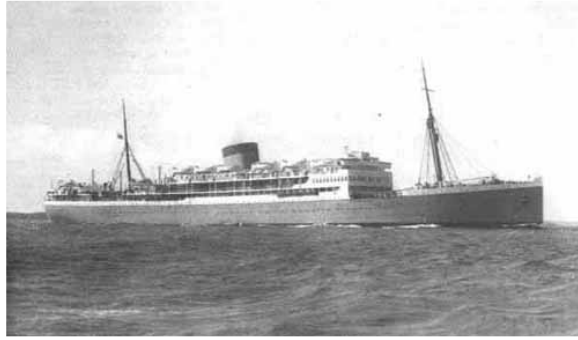


## MV Winchester Castle



MV Winchester Castle Union-Castle Mail Steamship Company Ltd. sailed from Mombasa with 790 Polish displaced persons arriving in Southampton on the 15th August 1948

	NAME			OCCUPATION
		M	F	
8	ADACH Feliksa		39	Housewife
9	ADACH Eleonora		12	Schoolgirl
10	ADACH Stanisław	21		
11	ADAMSKA Rozalia		38	Housewife
12	ADAMSKA Olga		14	Schoolgirl
13	ADAMSKA Stafania		11	Schoolgirl
14	ARNOLD Danuta		25	Housewife

	NAME			OCCUPATION
		M	F	
493	PADUCH Halina		22	
494	PALUBIAK Tomasz	55		
405	PALUBIAK Magdakena		51	Housewife
406	PALUBIAK Zofia		24	
407	PAPROCKA Bronislawa		49	Housewife
408	PAPROCKA Czesława		22	
409	PAPUGA Elzbieta		38	Housewife

303	KWIECINSKA Halina		21	
304	LAWRENCZUK Szymon	15		Schoolboy
305	LAWRENCZUK Jerzy	9		Schoolboy
306	LENIEC Jadwiga		39	Housewife
307	LENIEC Wanda		16	Schoolgirl
308	LENIEC Jan	15		Schoolboy
309	LEWKOWICZ Antonina		61	Housewife
310	LEWKOWICZ Nadzieja		24	
311	ŁUKASZEWSKA Salomea		77	Housewife
312	ŁUKASIEWICZ Oksenia		67	Housewife

698	WOCIAL Zofia		48	Housewife
699	WOCIAL Halina		18	
700	WOCIAL Janusa	13		Schoolboy
701	WĄŃCIEC Jozefa		49	Housewife
702	WĄŃCIEC Maria		25	
703	WĄŃCIEC Kazimiera		20	
704	WOJTAK Maria		52	Housewife
705	WOJTAK Szczepan	19		
706	WOJTAK Franciszka		19	
707	WOJTAK Wacław	15		Schoolboy

<http://www.polishresettlementcampsintheuk.co.uk/passengerlist/winchestercastle.htm>