



The KRESY-SIBERIA Foundation, Virtual Museum, and Discussion Group

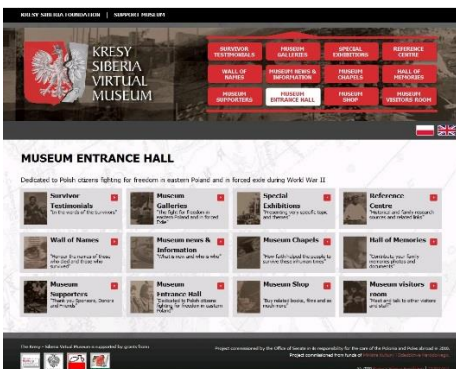
Who we are / What we do

The purpose of this bulletin is to share information with the members of the Kresy-Siberia Foundation, including over 1,000 members of the Kresy-Siberia Group on Yahoo, over 600 members on Facebook, and the many supporters and visitors of the Kresy-Siberia Virtual Museum.

With new members joining our ranks almost daily, it is important to keep everyone informed about our activities and our goals.

The Discussion Group was first established by Stefan Wiśniowski and a dozen internet friends on September 17, 2001.

On November 25, 2008, the Kresy-Siberia Foundation (KSF), headquartered in Warsaw, was established, in order to raise funds by applying for grants, and to manage the development of the Kresy-Siberia Virtual Museum (www.Kresy-Siberia.org).



The Virtual Museum was launched on September 17, 2009. It is the repository for all member materials, and its Galleries and Exhibits serve to tell the world about the WWII history of the Polish citizens from the Eastern Borderlands.

The Foundation also has a presence on Facebook at <https://www.facebook.com/KSF.FKS>



In 2010, 2011, and 2012, the Foundation had significant successes in applying for and obtaining grants from the Polish Senate, the Polish Ministry of Culture, the Polish History Museum, and the Polish Ministry of Foreign Affairs, as well as grants from Polonia organizations in Australia, Canada, the UK and the USA.

Kresy-Siberia incorporated official support organizations in Australia, Canada, Great Britain, and the United States, in order to enable tax-deductible donations. All of these support organizations have obtained charitable status in their respective countries.

Donations to the Kresy-Siberia Foundation for the development of the Virtual Museum are greatly appreciated. Please go to http://ksf.wmks.pl/?page_id=14&lang=en



KRESY-SIBERIA

The directors of the Foundation are those persons who have agreed to take on the financial accountability for the foundation. They are:

Stefan Wiśniowski, Founder and Foundation President
(attends Foundation Executive Committee meetings and sits on the Board of Directors of each country)

Kresy-Siberia Foundation

Aneta Hoffmann, Executive Committee Chair,
Krystyna Szypowska, Executive Committee Deputy Chair
Eva Szegidewicz, Executive Committee Member
Mirka Wojnar, Executive Committee Member
Maria Szonert, Executive Committee Member
Prof. Witold Łukaszewski, Executive Committee Member
Anna Pacewicz, Executive Committee Member

Kresy-Siberia (Australia) Ltd.:

Robert Czernkowski, Director
Anna Pacewicz, Director and Secretary
Lucyna Artymiuk, Director

Kresy-Siberia (Canada) Inc.:

Krystyna Szypowska, Director and Chair
Henry Sokolowski, Director
Krystyna P. Freiburger, Director

Kresy-Siberia (UK):

Eva Szegidewicz, Director, Trustee and Secretary-Treasurer
Mirka Wojnar, Director and Trustee
Krystyna Szypowska, Director and Trustee
Helen Bitner, Director and Trustee

Kresy-Siberia Foundation (USA) Inc.:

Maria Szonert-Bienienda, President
Eugene Bak, Director and Trustee
Prof. Marek Chodakiewicz, Director and Trustee
Prof. Witold Łukaszewski, Director and Trustee
Lisa Frac, Treasurer

Note:

There is no remuneration for any of these company officer positions. All members donate their time to ensure the smooth running of the Foundation and its Country support organizations, meeting all governmental requirements, attending Board Meetings, and advancing the objectives and goals of the Kresy-Siberia Foundation.

CONTACT INFORMATION



Fundacja Kresy-Syberia,
ul. Krakowskie Przedmieście 64/31,
00-322 Warszawa
T +48 22 556 9055
Polska@Kresy-Syberia.org



Kresy-Siberia (Australia) Ltd,
63/24 Buchanan Street
Balmain, 2041, NSW
T +61 414 258 022
Australia@Kresy-Siberia.org



Kresy-Siberia (Canada) Inc.,
362 Whitegates Crescent,
Winnipeg MB R3K 1L8
T +1-204-837-3199
Canada@Kresy-Siberia.org



Kresy-Siberia (UK),
7 Barnstead Ave,
Withington Manchester M20 4UL
T +44 161 445 6904
UK@Kresy-Siberia.org



Kresy-Siberia Foundation (USA),
6501 Lansing Ave, Cleveland, OH 44105
T +1-216-883-2828
USA@Kresy-Siberia.org



ONE of our main activities is the Survivor Testimony Project

KRESY-SIBERIA VIRTUAL MUSEUM

"I was a Soviet slave laborer during World War Two - who will remember my story?"

SIBERIAN DEPORTATION AND SLAVE LABOR TESTIMONIES

An audiovisual archive of memories of Soviet and Nazi repression

If you would like to give your testimony, or know of someone who may be interested in giving their testimony, or have items of historical or personal interest, please contact Krystyna Szybowska on 1-204-837-3199 or e-mail Krystyna.Szybowska@kresy.siberia.org to arrange a meeting or a recording session.

The project is conducted entirely by volunteers. Interviews will be held in the Survivor's Home or in a designated location.

Sponsored by: **Ministerstwo Kultury i Dziedzictwa Narodowego**

Canadian poster for the ST project

In addition to listening, time-stamping and extracting clips, then uploading them to the Virtual Museum, the process also involves setting up Wall of Names profiles for each of the family members of the interviewee (sometimes as many as 10 profiles or more).

The process also involves scanning, editing, and uploading dozens of photos and documents for many of the interviews recorded.

Most of the interviews in the Virtual Museum have been recorded by less than a dozen people, and they have **all** been processed and uploaded by only **two** members of our staff.

We need your help. Please volunteer ...

- **To be interviewed**
- **To interview survivors in your area**
- **To process interviews**
- **To transcribe and translate interviews**
- **To share your photos and materials with the Virtual Museum**
- **To upload photos and documents to the Virtual Museum**

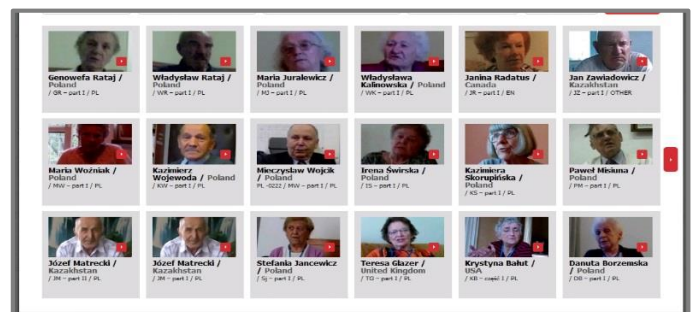
The Survivor Testimony Project, begun in 2010, continues in full force.

So far, nearly **1,400 excerpts from over 600 interviews**, have been published in the Virtual Museum.

It is our hope that these interviews will form a living archive attesting to this history, and will enrich education and research on this topic for decades to come.

Processing interviews is a time-consuming and tedious process, involving many steps....

For all information, please contact me at: Krystyna.Szybowska@Kresy-Siberia.org





KRESY-SIBERIA VIRTUAL MUSEUM'S EXHIBITION GALLERY ROOMS:

The museum's 29 exhibition gallery rooms cover the full range of wartime experiences in the Kresy and beyond. An overview version of all 29 gallery rooms is currently online, in English, with the Polish version due online in the next few months. A number of in-depth gallery rooms are online, in Polish only at present, and are indicated by the red check mark in the list below (note: 4c and 7d will be launched in by mid-July).

1 Polish Borderlands

- 1a. Historical Borderlands ✓
- 1b. Inter-war Borderlands (1918-39) ✓

2 Soviet Tyranny

- 2a. German and Soviet Invasion (1939) ✓
- 2b. Sovietization of the Borderlands (1939-41)
- 2c. Soviet Mass Deportations (1940-41) ✓
- 2d. Soviet Forced Labour (1940-41)
- 2e. The Katyn Massacres (1940) ✓

3 Unvanquished

- 3a. Escape to Fight from Abroad (1939-40)
- 3b. Polish Forces in the West (1940-45)
- 3c. Polish Air Force (1940-45)

4 Freed to Fight

- 4a. "Amnesty" for the Innocent (1941)
- 4b. Polish Armed Forces in the USSR (1941-42) ✓
- 4c. Polish 2nd Corps (1942-45) ✓

5 German Occupation

- 5a. Borderlands under German Tyranny (1941-44)
- 5b. Ukrainian Nationalist Genocide (1942-44)

6 Fighting for Survival

- 6a. Continued Exile in the USSR (1942-46)
- 6b. Polish Forces under Soviet Command (1943-45)

7 Refugees

- 7a. Polish Refugees in Middle East (1942-47)
- 7b. Polish Refugees in India(1942-48) ✓
- 7c. Polish Refugees in Africa (1942-50) ✓
- 7d. Polish Refugees in Mexico (1943-47) ✓
- 7e. Polish Refugees in New Zealand (1944-49)

8 Soviet Counterstrike

- 8a. Soviet Re-Occupation of the Borderlands (1944-45)
- 8b. Repatriation (1944-47)
- 8c. Post-war Deportations and Repressions (1944-56)

9 Diaspora

- 9a. Western Exiles' Dilemma (1945-46)
- 9b. Forever in the West (1946 -)
- 9c. Forever in the USSR (1946 -)
- 9d. Lest we forget ...





Tracing the Development of the Kresy-Siberia Virtual Museum (KSVM)

The objective of the KSVM is to present this little known chapter of Poland's WWII history in an interesting, multi-media fashion that will appeal to a multi-generational audience.

Accomplishing this requires a state-of-the-art web site that includes a complex and multi-faceted database, and a multitude of sections and sub-sections.

Museum Galleries

As shown on the previous page, we have launched 10 of an eventual 29 in-depth Gallery Exhibition Rooms (in Polish), as well as a condensed English version of all 29 Gallery Rooms, with the condensed Polish version coming soon.



Special Exhibits

We have developed and introduced four exhibits that present specific themes in considerable detail:

- People of the Polish Second Corps
- Border Protection Corps (1924-1939)
- Belarusians in Polish Military Formations (1918-1945)
- Identity and Culture – Autograph books and diaries of Polish Children in Exile

Wall of Names

In the past 4 years the Wall has grown from 2,000 names and profiles, to over 63,000 names and profiles. But there are hundreds of thousands of names yet to be added.



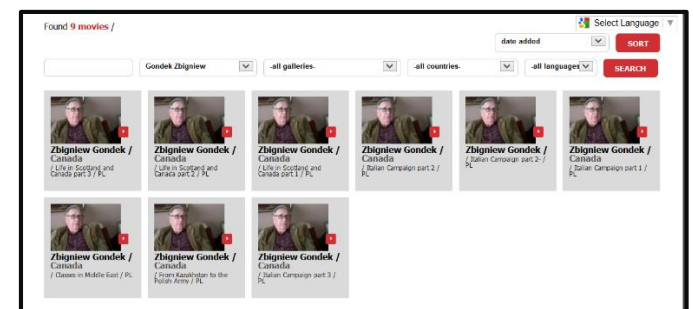
Hall of Memories

In the same 4 year period, we have increased our collection of photos and documents from 5,000 to nearly 11,500.



Hall of Testimonies

We have also launched the Hall of Testimonies, where we have uploaded nearly 1,400 Survivor Testimony video clips.





Ongoing Costs

IT Costs

IT development, Programming, Graphics, and Server Administration is one of the main cost categories that our grants have supported. We have engaged the services of an IT firm “**Momint / Digital One**” in Lodz, Poland to carry out these activities.

Included in IT costs are monthly Server fees for hosting the ever-growing website, as well as monthly costs of maintaining a Basecamp Project site where we archive all Foundation documents (both those required for regulatory purposes, those associated with grants, as well as project documentation).

Administrative Costs

The Foundation maintains a one-room office in Warsaw, while the offices of the country organizations are located in the private homes of Directors.

Administrative costs include: Accounting costs, telephone and internet costs, mailing and courier costs, as well as office supplies, printing of media packages, brochures, business cards, and all documents associated with filing grant applications.

Operating Costs

These costs include paying for the production of historical texts used in the Museum Gallery Rooms and Exhibits, as well as the acquisition of archival materials, the development of displays and exhibits used in presentations and events, costs associated with the recording and production of interviews, costs of uploading materials to the Virtual Museum, and costs of coordinating the work of teams of volunteers, etc.

We have accomplished much, with a very limited number of staff (ranging from 3 to 6, depending on grant project work), and some very dedicated volunteers. To keep costs low, staff salaries (when any have been paid) have been set at, or below, minimum wage levels.

There is much still left to do in order to capture the words, images and documents of the witnesses to this history. They are leaving us quickly, and their collections and histories are often lost with their passing.

We continue to apply for Government-funded grants, as well as grants from private corporations but, contrary to previous years, we have so far not been successful in obtaining grants in 2013.

Detailed financials are being prepared, and will be published as soon as a volunteer team of directors can complete this task.



THE KRESY-SIBERIA VIRTUAL MUSEUM HAS BEEN SUPPORTED BY GRANTS FROM



Senate of the Republic of Poland



Ministry of Culture and National Heritage of Poland



Ministry of Foreign Affairs Republic of Poland

Ministry of Foreign Affairs of Poland



Polish History Museum (Warsaw)



Urząd do Spraw Kombatantów i Osób Represjonowanych



Bank Zachodni WBK S.A.

As well as a number of Polonia and Veteran organizations in Australia, Canada, UK and USA

HOW CAN YOU HELP?

You can participate in the KRESY-SIBERIA initiative by offering your treasure, time, and talents

- **Make a donation:**

	Dollar	GBP	EUR	PLN
Friend	40	25	30	120
Bronze	100-499	60-299	70-349	300-1499
Silver	500-2499	300-1499	350-1749	1500-7499
Gold	2500+	1500+	1750+	7500+

- Nominate the KRESY-SIBERIA FOUNDATION in your will
- Share photos or documents with the Virtual Museum
- Be interviewed about your experiences
- Volunteer to help with KRESY-SIBERIA's work (translating / transcribing/interviewing, etc.)
- Share any other ideas you may have

Please contact your nearest Foundation branch, as listed on page 2 of this newsletter.

All donors are recognized in the KRESY-SIBERIA VIRTUAL MUSEUM

See list of individual donors at ...

<http://kresy-siberia.org/muzeum/wsparli-nas-2/donors?lang=en>